

Cellular Hot Spot



Cellular Hot Sport

What is a Cellular Hot Spot?

A cellular hotspot converts cellular signals to Wi-Fi and vice versa to provide Internet access.

A local hotspot is created by the following methods.

*Most New (past 5 years) Smartphones have both **cellular and Wi-Fi built in**, and most phones can cross-connect the two to become a portable hotspot for nearby laptops and tablets.*

Also called "tethering. **

** *Depending on your Cellular Data Plan*

Cellular Hot Sport

What is a built-in Wi-Fi hotspot?

Built-in units provide a Wi-Fi hotspot within the cabin of a car or truck.

In-vehicle cellular hotspots are available for many makes and models, and third-party devices are also made that plug into the car's diagnostic port.

Ever wonder how your car dealership knows it time for your Oil change?

The Cars connectivity to the manufacture's network where it shares your vehicle's data

Cellular Hot Sport

How to Use Your Smartphone/Mobile Hotspot

Public Wi-Fi hot spots are all over the place. (Starbucks, McDonalds, Buttonwood Bay)

Generally unsecured

.

Cellular Hot Sport

How to Use Your Smartphone/Mobile Hotspot

Smartphone & Mobile Hotspots (*Jet packs) are utilizing faster and more secure data connections. Technology advancements (speed and reliability) had greatly improved. 4G LTE & 5G

Today most smartphones include a built-in mobile hotspot Wi-Fi connection for your laptop or tablet. These functions allow you to work and browse the Internet while you're on the go.

Cellular Hot Sport

How to Use Your Smartphone/Mobile Hotspot

With a mobile hotspot, you can connect to 10 * mobile devices via a 4G LTE / 5G smartphone.

After a few quick steps, the phone creates its own secure Wi-Fi network for your device(s) to join.

There's no need for a USB cable, and multiple users can share your phone's mobile data plan at once.

* General rule

Cellular Hot Sport

How to Use Your Smartphone/Mobile Hotspot

There are a few things you'll want to keep in mind. If you aren't subscribed to a Unlimited Data Plan, any *data used* by a connected device(s) will be deducted from your plan's total data.

Be sure to keep your **mobile hotspot password protected** - if its disabled, anyone can connect without your permission and potentially access transmitted data.

Cellular Hot Sport

Verizon calls its stand-alone mobile hotspot devices “Jetpacks.”

Jetpacks create Wi-Fi hotspots backed by Verizon’s network.

Computers, phones, and other devices with Wi-Fi capabilities can connect to Jetpacks like they connect to conventional Wi-Fi hotspots.

Cellular Hot Sport

Version Jetpack Plans

Verizon has a lot of options for [Jetpack plans](#). Some of the best deals are only available for people who are already using one of Verizon's postpaid plans for phone service.

Cellular Hot Sport

Jetpack plans for unlimited plan subscribers

Subscribers on Verizon's postpaid unlimited plans are eligible for two [add-on plans](#):

- **Unlimited** – \$20 per month
- **Unlimited Plus** – \$30 per month

Subscribers with at least one line on Verizon's Do More Unlimited plan or Get More Unlimited plan get a 50% discount on Jetpack add-ons (*i.e., the Unlimited plan drops to \$10 per month*).

Cellular Hot Sport

The word “**unlimited**” in the names of the plans is **misleading**.

The Unlimited plan allows **15GB** of regular-speed Jetpack data each month.

The Unlimited Plus plan comes with **30GB** of regular-speed data. On both plans, subscribers that run out of regular-speed data can continue to use the internet at sluggish speeds (*about 600Kbps*). If you use a Jetpack to connect a laptop to the internet, you’ll probably find 600Kbps excruciatingly slow.

Cellular Hot Sport

Jetpack plans for shared-data plan subscribers

Subscribers on Verizon's shared-data plans can add a Jetpack to their accounts for **\$10 per month**. **

Jetpacks on these plans will drain from subscribers' regular allotments of shared data.

** this does NOT include the price of the Hardware's one time charge

Cellular Hot Sport

Stand-alone Jetpack plans

Verizon offers four **postpaid** Jetpack [plans](#) that don't require subscribers to also have phones on Verizon's network.

- **Essential – 15GB:** \$20 per month
- **Plus – 50GB:** \$40 per month
- **Pro – 100GB:** \$60 per month
- **Premium – 150GB:** \$80 per month

Cellular Hot Sport

Prepaid Jetpack plans

Verizon offers [three prepaid plans](#) for Jetpacks:

- **6GB** – \$35 per month
- **16GB** – \$45 per month
- **30GB** – \$65 per month

The prices in the list above include a \$5 per month discount for enrolling in *automatic payments*. The discount is not available for the first month of service.

Cellular Hot Sport

Where to purchase mobile modems/Internet device

Verizon / AT&T / T-Mobile (They all offer some type of hardware)
Limited

**Amazon / Online - (Be sure to purchase a device the connects to
your carrier)**

Various RV/Mobile stores/internet

Cellular Hot Sport

AT&T / T-Mobile / US Cellular

Similar Plans as Verizon

Generally, Today they push the Hotspot/Tethering on Smartphone options.

Cellular Hot Sport

Hotspot/Tethering on Smartphones

Does utilizing Hotspot(s) on smartphone damage or shorten the life?

NO

How many devices can be connected at a time to a Smartphone hotspot?

Generally, 10

Should I plug in my Smartphone when using the Hotspot?

Yes * This will consume additional power and drain the battery

Cellular Hot Spot

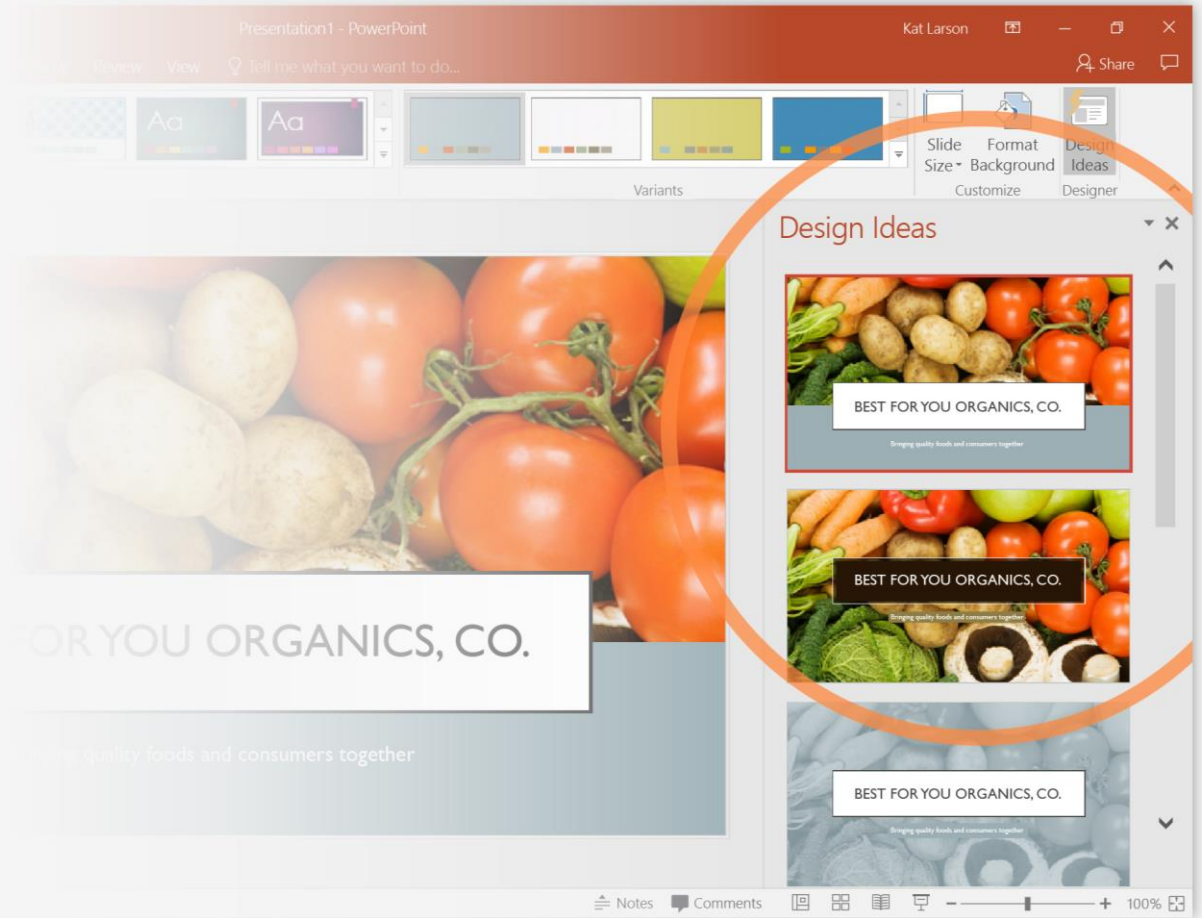
Questions???



Designer helps you get your point across

PowerPoint Designer suggests professional designs for your presentation, based on the content in your slides.

Designer is a subscription-only feature. If you have an Office 365 subscription, the next slide shows you how it works in a new presentation.



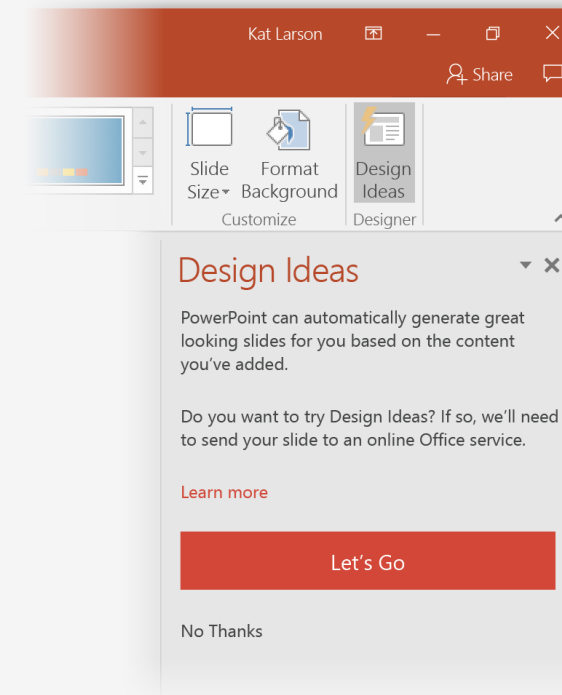
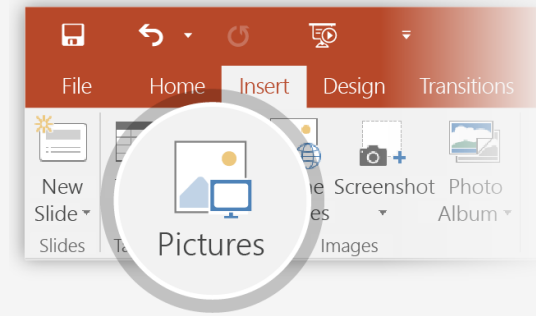
How to use PowerPoint Designer

How it works:

- 1 Start a new presentation by going to **File > New > Blank Presentation**.
- 2 On the very first slide, add a picture: Go to **Insert > Pictures** or **Insert > Online Pictures** and choose the picture.

Hint: You need to be online when you add the picture.

- 3 When PowerPoint asks your permission to get design ideas, select **Let's Go**.
- 4 Choose a design you like from the **Design Ideas** task pane.

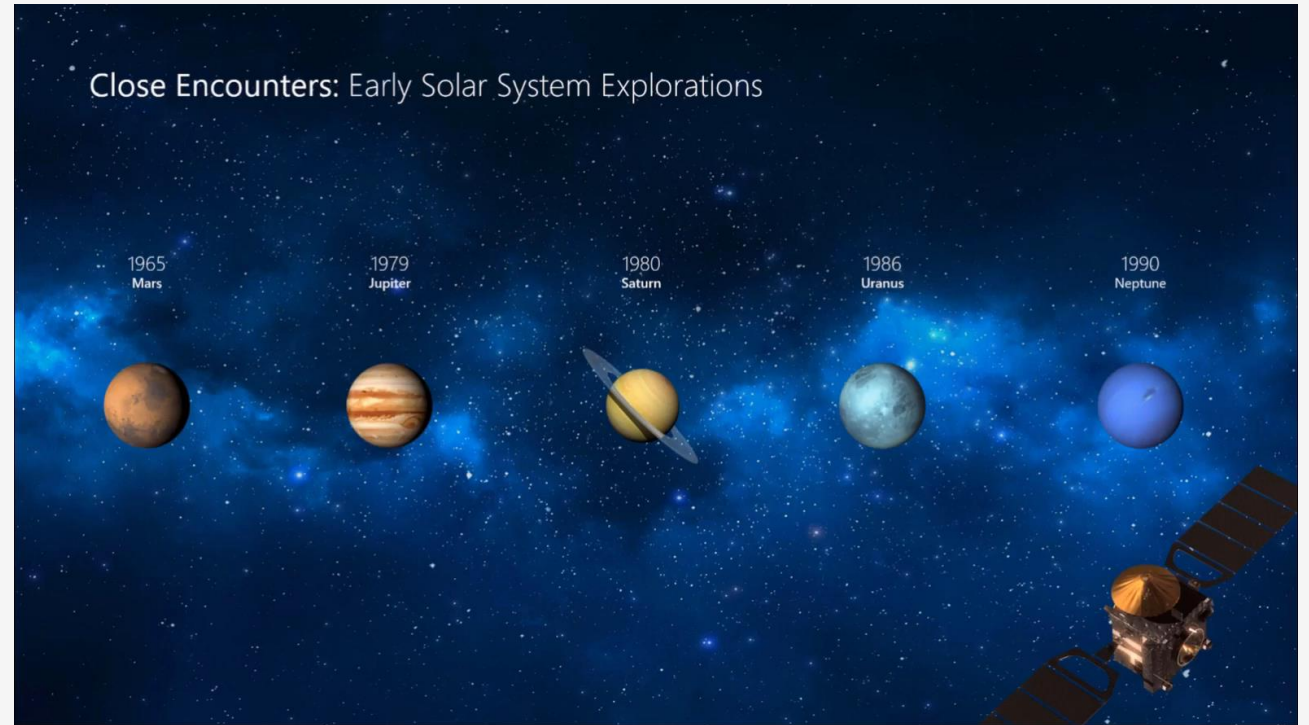


Morph

Morph makes smooth animations and object movements in your presentation. You use two similar slides to perform the animation, but it looks to your audience like the action happens on one slide.

Play the video on the right to see a quick example.

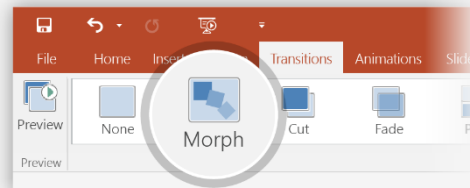
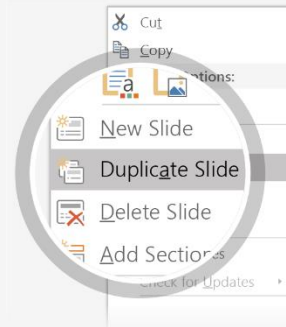
Morph is a subscription-only feature. If you have an Office 365 subscription, you can try it yourself with the steps on the next slide.



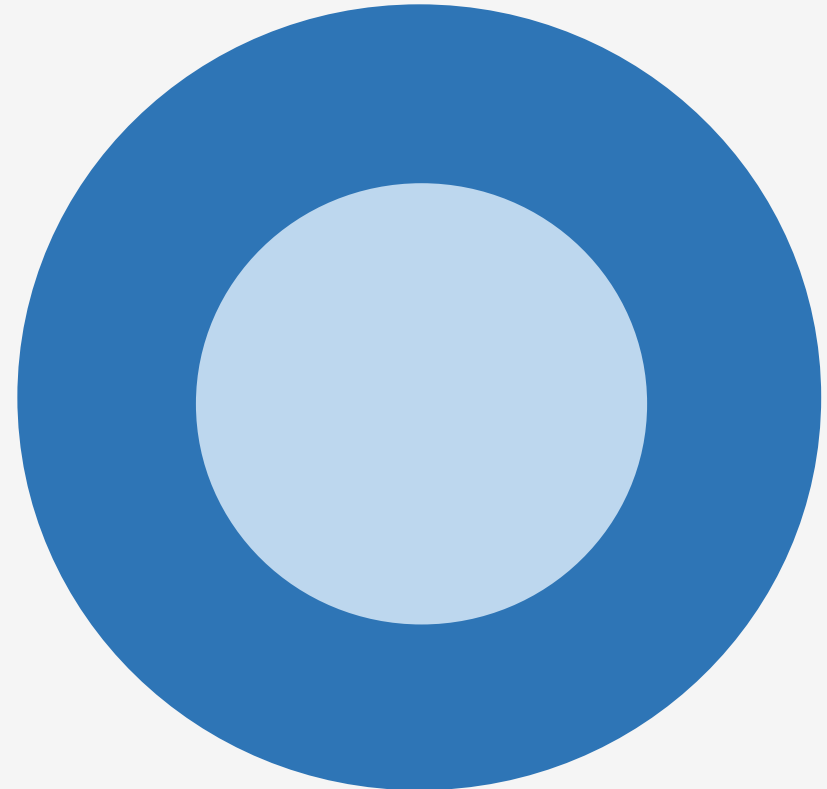
Setting up Morph

Try it yourself with these two simple “planets”:

- 1 Duplicate this slide: Right-click the slide thumbnail and select **Duplicate Slide**.
- 2 In the second of these two identical slides, change the shapes on the right in some way (move, resize, change color), then go to **Transitions > Morph**.
- 3 Return to the first of the two slides and press **Slide Show** button and then select **Play** to see your circle morph!



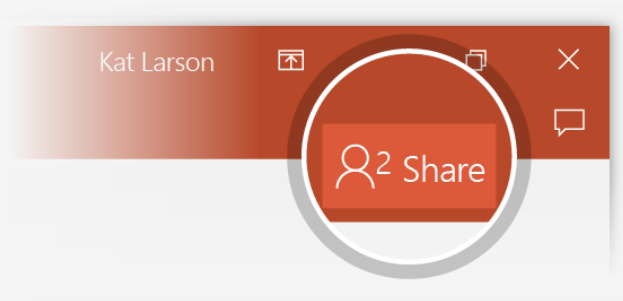
Hint: Effect Options gives you even more options for Morph.



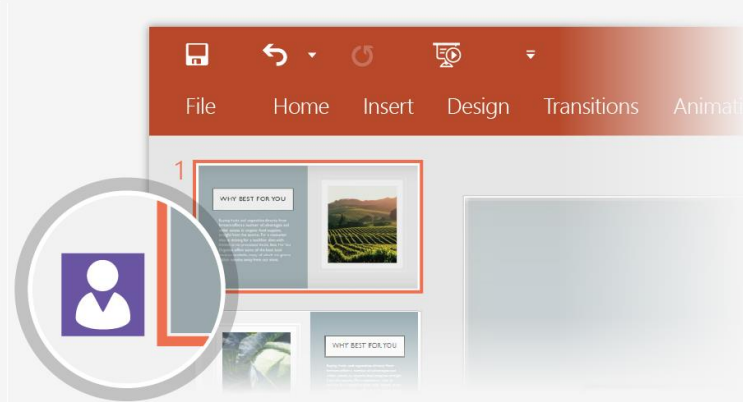
Working together in real time

When you share your presentation with others, you'll see them working with you at the same time.

How it works:



- 1 Select **Share** from above the ribbon, or by using short-key **Alt-ZS**, to invite people to work with you (You can save to the cloud at this point.)



- 2 When other people are in the presentation, a marker shows who is on which slide...



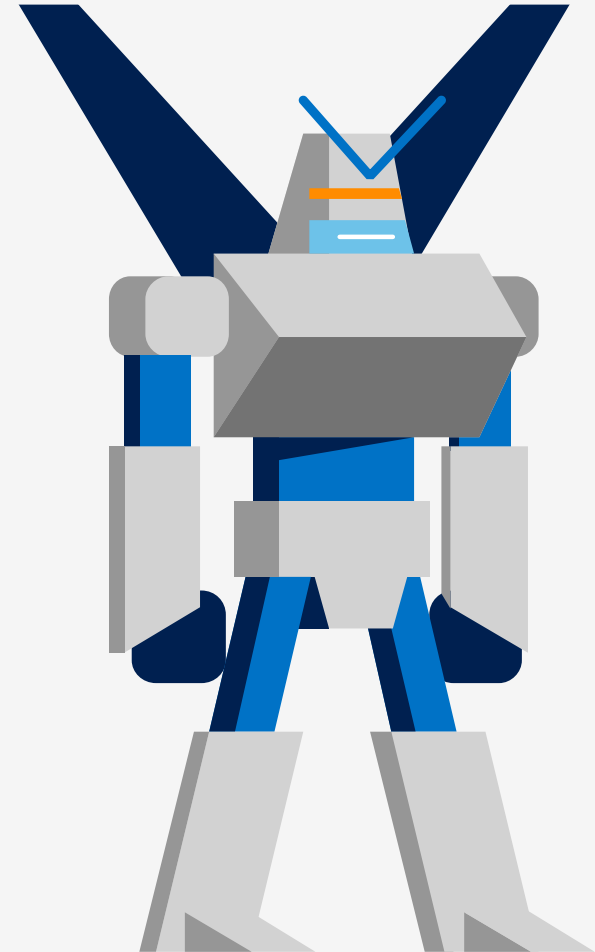
- 3 ...and the part of the slide they're editing.

You're an expert with Tell Me

The Tell Me box finds the right command when you need it, so you can save time and focus on your work.

Try it:

SELECT ME

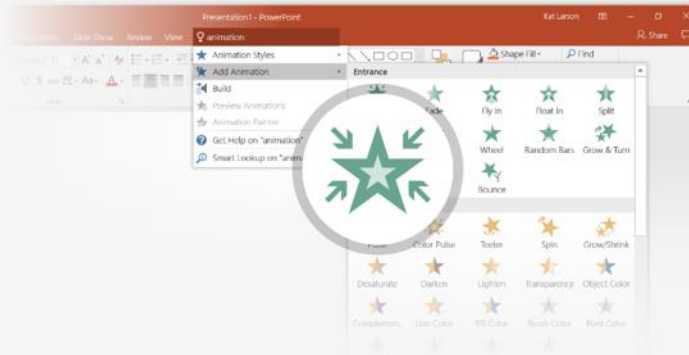


1 Select the Robot picture on the right.

2 Type *animation* in the **Tell Me** box, and then choose **Add Animation**.

💡 Tell me what you want to do...

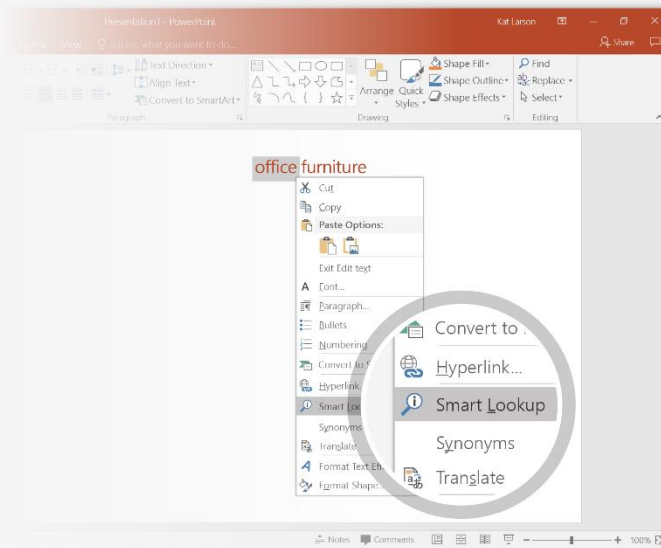
3 Choose an animation effect, like **Zoom**, and watch what happens.



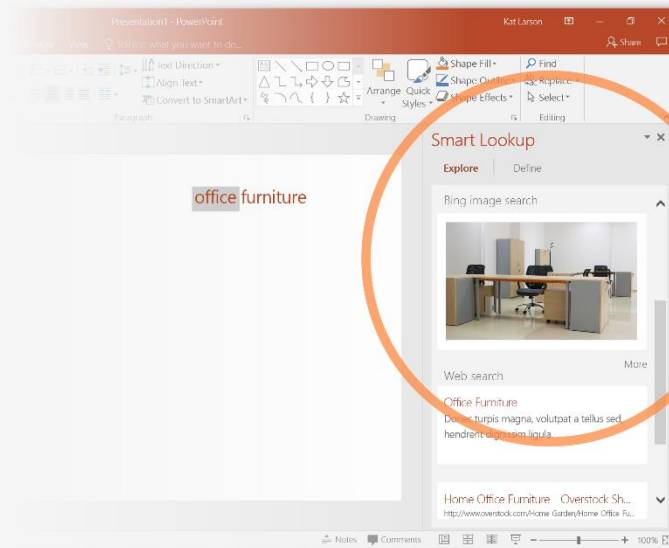
Explore without leaving your slides

Smart Lookup brings research directly in to PowerPoint.

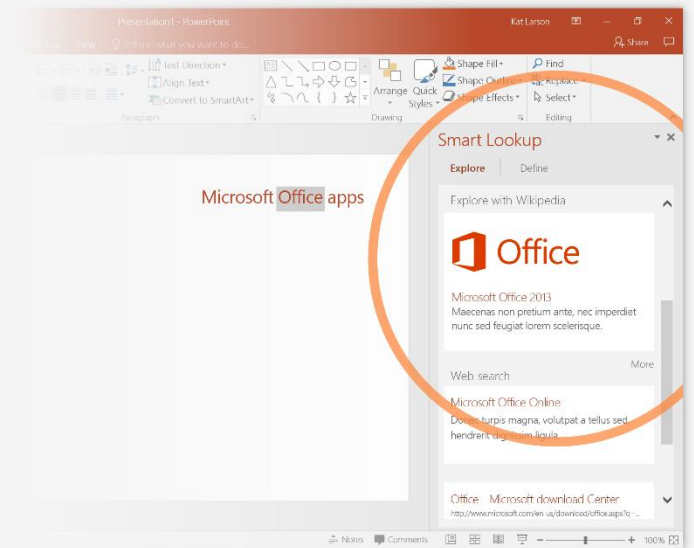
Try it:



1 Right-click in the word *office* in the following phrase: **office furniture**



2 Choose **Smart Lookup**, and notice that results are contextual for that phrase, not **Microsoft Office apps**.



3 Just for fun, try Smart Lookup again by right-clicking in the word *Office* in Step 2.

More questions about PowerPoint?

Select the **Tell Me**

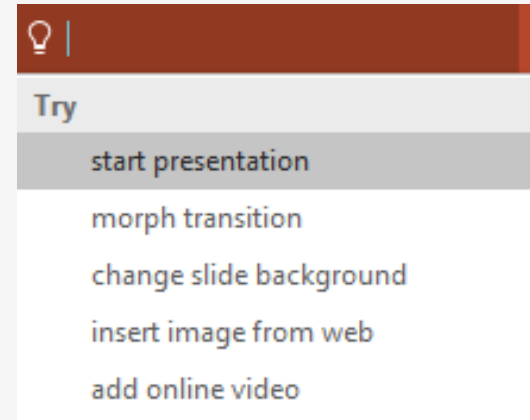


button and type what you want to know.

[Visit the PowerPoint team blog](#)



[Go to free PowerPoint training](#)



SELECT THE ARROW WHEN IN SLIDE SHOW MODE